

SPIRAL DUCT GRILLES

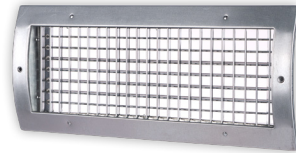


The most comprehensive spiral grille offering in the HVAC industry



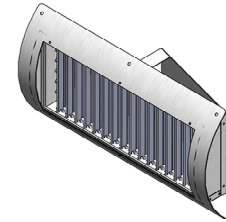
RS52 Radial Spiral Pipe Grille – Single Deflection

Blades are parallel to shortest dimension



RS34 Radial Spiral Pipe Grille – Double Deflection

Front blades parallel to shortest dimension



RS-SS Radial Spiral Pipe Grille – Stainless Steel

Single or double deflection with front blades parallel to longest or shortest dimension



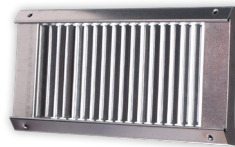
SD52 Transition Box Spiral Pipe Grille – Single Deflection

Blades parallel to shortest dimension



SD34 Transition Box Spiral Pipe Grille – Double Deflection

Front blades parallel to shortest dimension



USR52 Universal Spiral Grille – Single Deflection

Blades parallel to shortest dimension



USR34 Universal Spiral Grille – Double Deflection

Front blades parallel to shortest dimension

Spiral Duct Grille Options

PRODUCT OPTIONS	RS Series			SD Series		USR Series	
	RS52	RS34	RS-SS	SD52	SD34	USR52	USR34
Opposed Blade Damper	✓	✓	✓	✓	✓	✓	✓
Full Scoop	✓	✓	✓	✓	✓	✓	✓
Half Scoop	✓	✓	✓	✓	✓	✓	✓
Designer/Std. Colors	✓	✓	na	✓	✓	✓	✓
Perforated Face	✓	✓	na	✓	✓	✓	✓
Lattice Face	na	na	na	✓	✓	na	na
Linear Bar Face	na	na	na	✓	✓	na	na

SPIRAL DUCT DIFFUSERS



Drum Louver (DL-DA)



CLEAR ANODIZED

- Engineered for high capacity, long throw applications such as sports arenas, gymnasiums, conference centers, industrial plants and other large spaces
- Flexibility to change throw direction and spread of the discharge jet

Spiral Drum Louver (DLS)



WHITE

- Provides primary supply air in commercial and industrial settings
- Jet or diffused air pattern
- Available up to 48" long
- For use on 12" through 48" spiral pipe (see submittal for sizes)

Drum Louver Options

Description	Drum Louvers (DL)	Spiral Drum Louver (DLS)
Dual Vane	DL2	DLS2
Gang Operated	DL-GO	DLS-GO
Damper	DL-DA	DLS-DA

Round Ceiling Diffuser (RD)



Front View – Glossy White



Side of RD showing 3/4" collar

Features

- Uniform 360° discharge pattern
- 2 position adjustment for heating and cooling seasons
- To adjust diffuser, remove the two center cones as a unit and reposition the six screws
- Retainer cables are provided on sizes 12" and larger to allow the inner cones to hang securely while adjusting the diffuser

*Have questions? Visit www.shoemakermfg.com
Call your sales representative or call us – 1.866.940.0696*