

Standard Features:

- Designed for supply or return
- 3/16" steel construction
- 1" flanged perforated face with 5/16" diameter holes on 7/16" staggered centers stitch welded to sleeve
- Standard 12" sleeve
- White

Options:

- All aluminum construction (1406-A)
- All stainless steel mill finish (1406-SS)
- Countersunk mounting holes with color matching Tamper Proof Screws

Hole Pattern

1/4" holes on 3/8" centers

Face Plate Material:

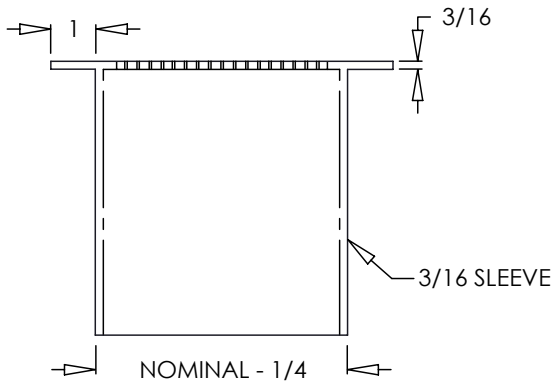
12 ga. steel 10 ga. steel

Sleeve Material:

14 ga. steel 12 ga. steel 10 ga. steel

Sleeve Length:

No Sleeve Other (minimum sleeve length 2 1/2"): _____



Product Notes:

*Sleeve lengths are typically sized at least 2" longer than wall thickness.
 Additional Security Grille options available.

Additional Information:

Submittal Notes

| | |
|---------------------|--|
| Project / Location: | |
| Engineer: | |
| Architect: | |
| Contractor: | |