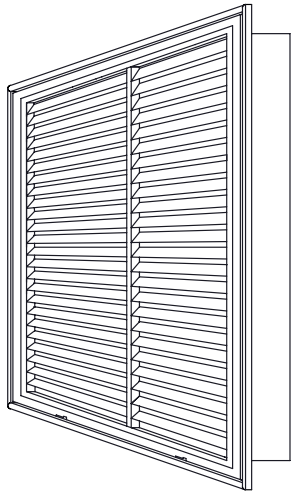


Commercial Submittal

Fixed 45° Airfoil Blade Filter Grille

MODEL: 905FG



Standard Features:

- Fixed 45° aluminum airfoil blades parallel to the longest dimension
- Hinged removable extruded aluminum face frame with signature line marks
- Hinges parallel to longest side
- Hand operated lever for easy filter access
- 4-way reversible door on square sizes
- 2-way reversible door on rectangular sizes
- Concealed mounting holes with mounting screws
- Holds up to a 1" filter (not included) with filter retention tabs (905FG1)
- Rust resistant pre-coat with durable powder finish
- Soft White

Options:

- 2" Filter capacity (905FG2)
- 4" Filter capacity (905FG4)
- Blades parallel to shortest dimension (906FG1/906FG2/906FG4)
- Adjustable airfoil blade filter grille (901FG/902FG)
- Fixed 0° aluminum airfoil blades (907FG/908FG)
- Alternative hinge and latch options – see Filter Grille Order Supplement form on website

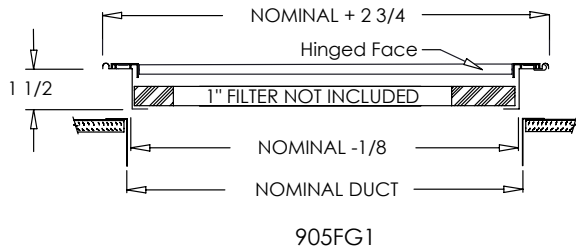
Finishes:

STANDARD COLORS

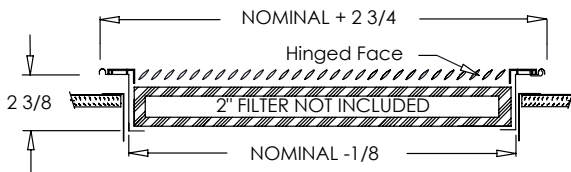
- Soft White
- Driftwood Tan
- Mill Finish

DESIGNER COLORS

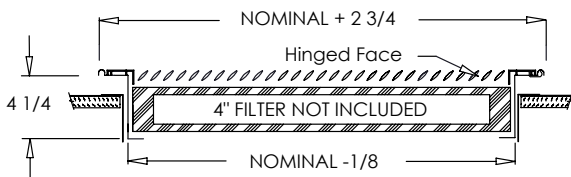
- Black
- Bronze
- Storm Gray
- Cement Gray
- Aluminum Paint
- Coffee Tan
- Warm White
- Glossy White



905FG1

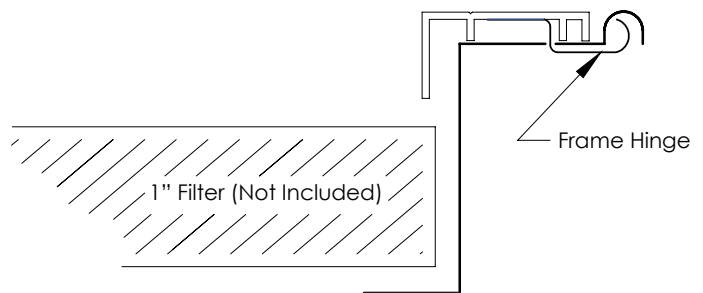


905FG2



905FG4

905FG1 Frame Detail



Product Notes:

Filter grilles are manufactured 3/16" undersized nominal duct (outside dimension) for ease of installation. Air filter should be 1/4" to 1/2" undersized. Verify with air filter manufacturer for air specification to ensure a proper fit. Shoemaker filter grilles allow for installation of larger thickness filters (we offer 2" and 4" filter depths on specific models) which can reduce pressure drop on the overall system, improving air flow through the heat exchanger and allowing more time between filter changes. Contact customer service for more information.

Additional Information:

Submittal Notes

Project / Location:	
Engineer:	
Architect:	
Contractor:	