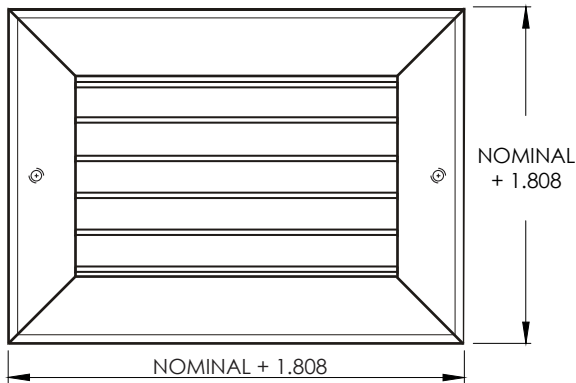


Commercial Submittal

Stainless Steel Adjustable Blade Single Deflection Grille (blades parallel to longest dimension)
 MODEL: 931-SS

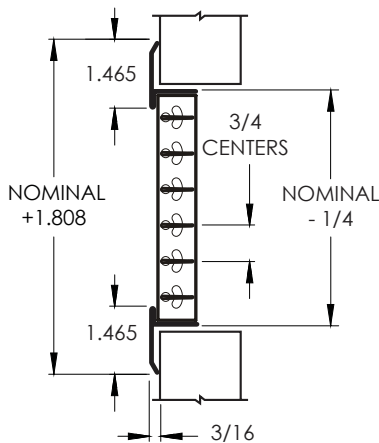
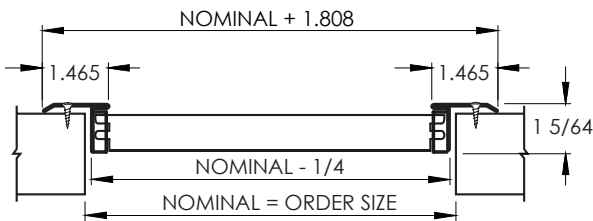


Standard Features:

- Type 304 stainless steel
- Adjustable single deflection grille
- Airfoil blades individually adjustable on 3/4" centers, parallel to longest dimension given
- Countersunk mounting holes with stainless sheet metal screws
- Minimum size 4"x4"
- Maximum size 48"x48"
- Satin polished finish

Options:

- Type 316 stainless steel
- Opposed blade damper
- Available blade centers at 1/2", 1", & 1 1/2"
- Long throw individually adjustable blades with 1 1/2" blades on 1 1/2" centers or 3" blades on 3" centers
- Square to round transition collar
- T-Bar application
- Tamper Proof Screws – stainless steel Torx Center Pin



Additional Information:

Submittal Notes

Project / Location:	
Engineer:	
Architect:	
Contractor:	